



Procedure Guide

English

PPD for Brisque version 5.0

Copyright

Copyright © 2004 Creo Inc. All rights reserved. Data subject to change without notice.

Internal 731-00215A-EN

Creo and the Creo logo are trademarks or registered trademarks of Creo Inc. The Creo products mentioned in this document are trademarks or service marks of Creo Inc. and may be registered in certain jurisdictions. Apple, AppleShare, AppleTalk, EtherTalk, LaserWriter, LocalTalk, and Macintosh are trademarks of Apple Computer, Inc., registered in the U.S. and other countries. Adobe and PostScript are trademarks of Adobe Systems Inc., are registered in the U.S. Patent and Trademark Office, and may be registered in other jurisdictions as well. Acrobat, the Acrobat logo, and Adobe Illustrator are trademarks of Adobe Systems Incorporated, which may be registered in certain jurisdictions. Microsoft, Windows, and Windows NT are registered trademarks or trademarks of Microsoft Corporation in the U.S. and/or other countries. AIX, PowerPC, and RS/6000 are registered trademarks of International Business Machines Corporation. Other company and brand, product, and service names are for identification purposes only and may be trademarks or registered trademarks of their respective holders.

No copying, distribution, publication, modification, or incorporation of this document, in whole or part, is permitted without the express written permission of Creo Inc. In the event of any permitted copying, distribution, publication, modification, or incorporation of this document, no changes in or deletion of author attribution, trademark legend, or copyright notice shall be made. No part of this document may be reproduced, stored in a retrieval system, published, used for commercial exploitation, or transmitted, in any form by any means, electronic, mechanical, photocopying, recording, or otherwise, without the express written permission of Creo Inc. This document is distributed in Adobe Systems Incorporated's PDF (Portable Document Format). You may reproduce the document from the PDF file for internal use. Copies produced from the PDF file must be reproduced in whole.

.....
Creo Inc.
3700 Gilmore Way
Burnaby, B.C., Canada
V5G 4M1
Tel: +1.604.451.2700
Fax: +1.604.437.9891
<http://www.creo.com>
.....

Revised March 2004

Contents

PPDs for Brisque version 5.0.....	1
Macintosh/Windows Users	1
Installation	2
Features of the PPDs	5
Important Notes for QX Users	9

PPDs for Brisque version 5.0

The PPD applicable to your system is detailed in the table below:

Product	Platform	PPD	Driver
Brisque5.0	Macintosh	<ul style="list-style-type: none">• BrisqueV5MAC.ppd <p>Note: LaserWriter is not supported on OS X. It is recommended not to use LaserWriter 8.3x or less on OS 9.</p>	<ul style="list-style-type: none">• LaserWriter 8.4 or higher, including AdobePS.
Brisque5.0	Macintosh Japanese version	<ul style="list-style-type: none">• BrisqueV5MAC_J5.ppd• BrisqueV5MAC_J7.ppd• BrisqueV5MAC_J23.ppd	<ul style="list-style-type: none">• LaserWriter 8.4 or higher, including AdobePS.
Brisque5.0	Windows	BrsqV5PC.ppd	
Brisque5.0	Windows Japanese	<ul style="list-style-type: none">• BrV5PCJ5.ppd• BrV5PCJ7.ppd• BrV5PCJ23.ppd	

Macintosh/Windows Users

It is recommended that you download the latest Adobe PostScript Drivers for Windows/Macintosh from the Adobe Web Site:

www.adobe.com/support/downloads/main.html.

Installation

Windows Users

For instructions on installation, refer to the document [Printing to the Brisque from a PC](#) (in pdf format). This document is a Procedure Guide (part number 399Z1R763C) located on the Brisque 5.0 Accessories CD.

Macintosh Users – OS 9

To install the PPD's on a Macintosh:

1. On the Accessories CD, go to the Mac folder located in **PS/PDF Utils/Brisque 5.0 PPDS**.
2. In the Mac folder, copy the PPD files to the system folder **Printer Descriptions** located in the **Extensions** folder.
3. On the menu bar, go to **Apple -> Chooser**.
4. Select a driver.
5. In the Select a Postscript Printer Window, select a Brisque Printer.
6. Click **Setup**.
7. Select a **Brisque PPD**.
8. Click **Select**.

Macintosh Users – OS X

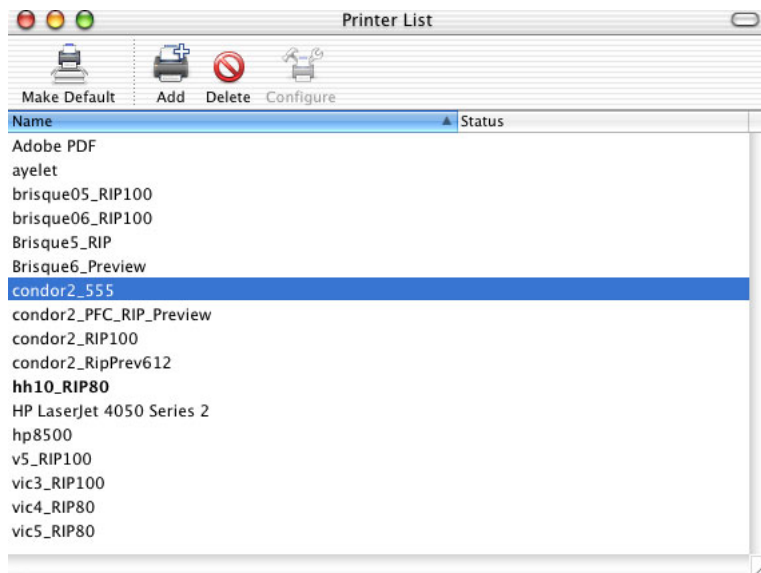
To install the PPD's on a Macintosh:

1. On the Accessories CD, go to the Mac folder located in PS/PDF Utils/Brisque 5.0 PPDS.
2. Copy the PPD files to the correct location in the Resource Library according to your system language, as follows: **Library/Printers/PPDs/Contents/Resources**. For example, if your computer's language configuration is English, copy the PPD files to the **en folder**.

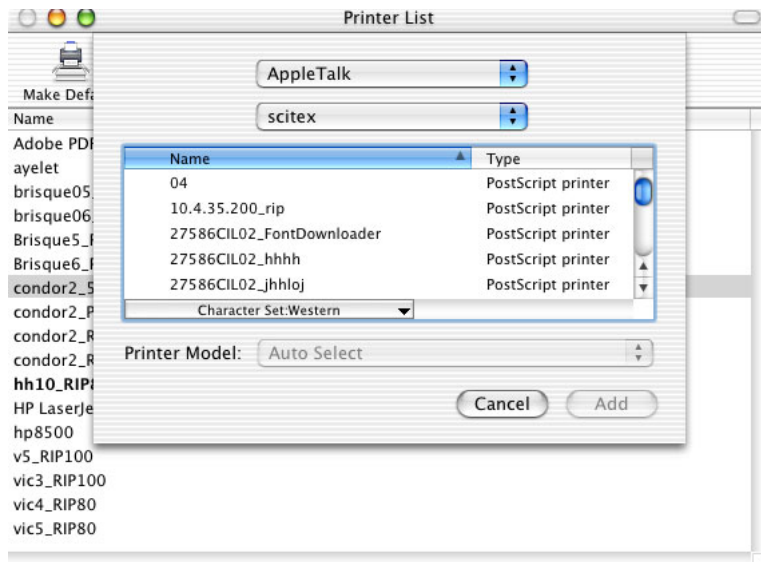


Note: You can copy the PPD files to any location on your computer, however, it is recommended to copy them to the appropriate language folder in the Resource Library.

3. To add a printer, from the **OS X** menu bar, select **Utilities** -> **Print Center**. The **Printer List** window appears, as shown below.



4. From the **Printer List** menu bar, click **Add**. The following menu window appears:

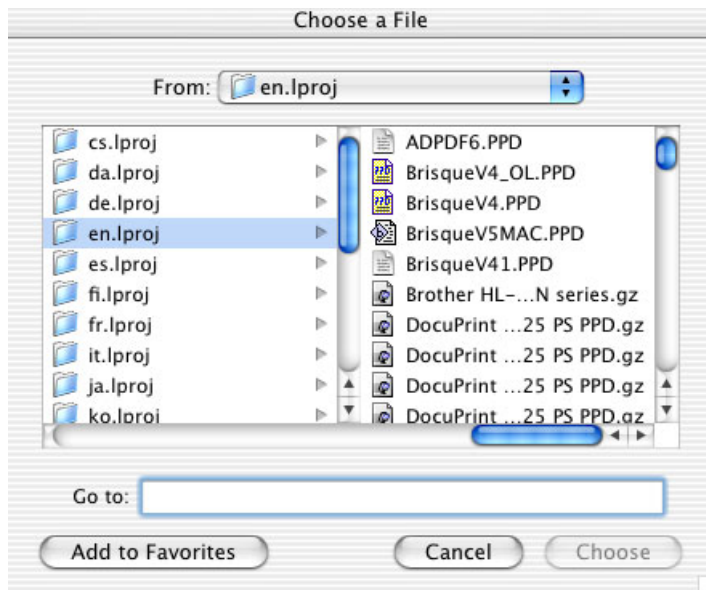


- a. From the **Zone** dropdown box above the menu, select the correct **Printer zone**. All the printers in that zone appear in the menu. Select the printer that you need.



Note: When you configure a hot folder with the printer in Brisque, the printer will appear in the Printer List.

- b. From the **Printer Model** dropdown box beneath the menu, select **Other**. The **Choose a File** window appears, as shown below.



5. Scroll to the location where the Brisque 5 PPD file is located and click **Choose**.
6. In the open **Printer List** menu window, click **Add**. The selected printer is added to the list of printers and, by default, becomes the new default printer.

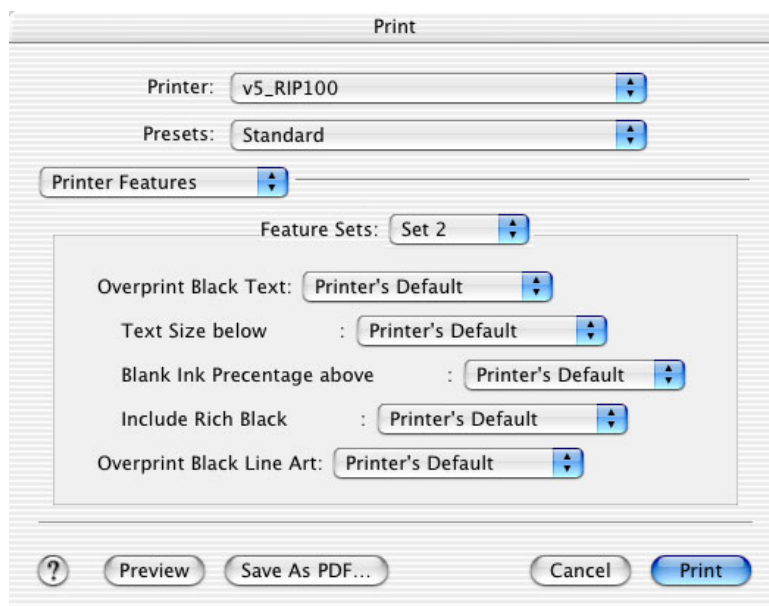
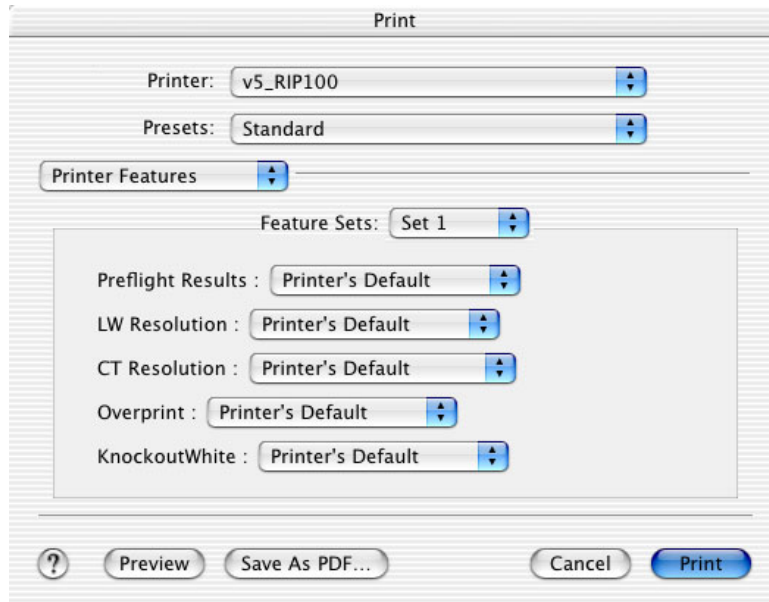


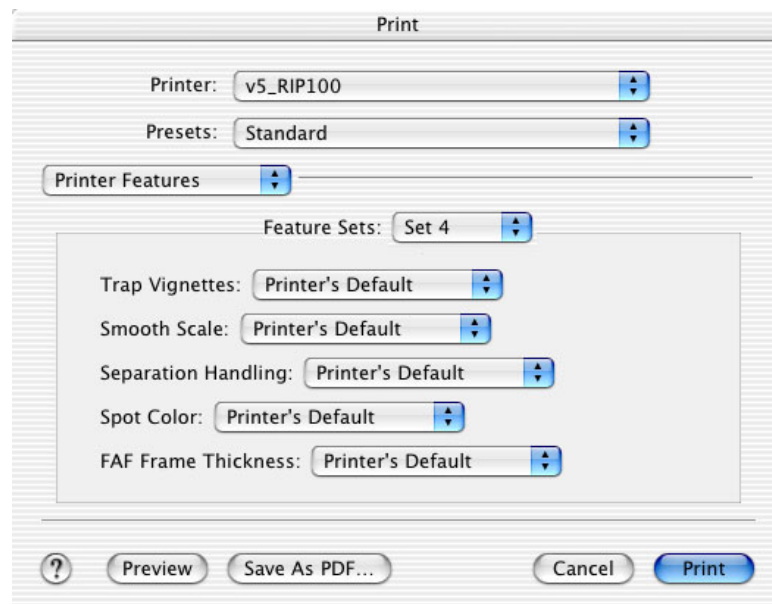
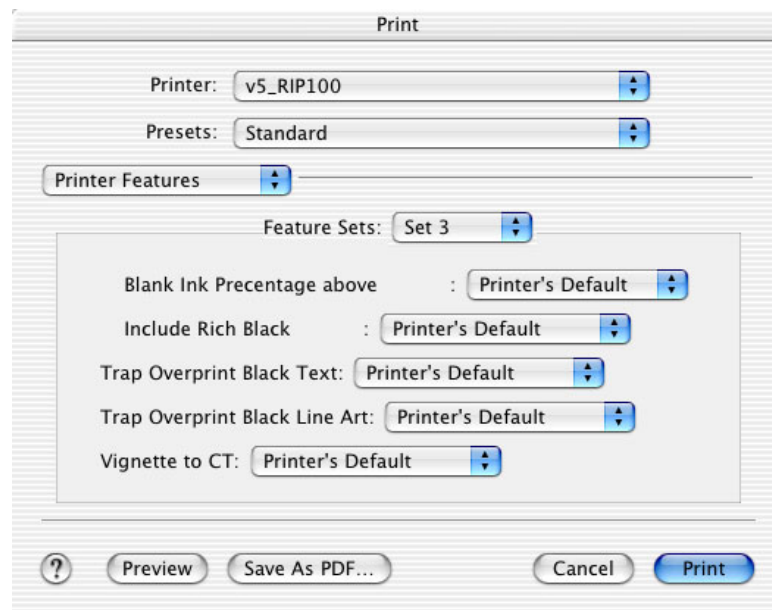
Note: Each time a printer is added to the Printer List, it becomes the new default printer.

Features of the PPDs

The PPDs released with Brisque version 5.0 include the following new features:

- An updated paper size and output devices list.
- There is no custom size limit for QX.
- Updated Printer Specific Option





Print

Printer: v5_RIP100

Presets: Standard

Printer Features

Feature Sets: Set 5

FAF Create Backup: Printer's Default

Screen Set: Printer's Default

Swap Screening Parameters: Printer's Default

Expose Which Separations: Printer's Default

Film Output: Printer's Default

? Preview Save As PDF... Cancel Print

Print

Printer: v5_RIP100

Presets: Standard

Printer Features

Feature Sets: Set 6

Film Layout: Printer's Default

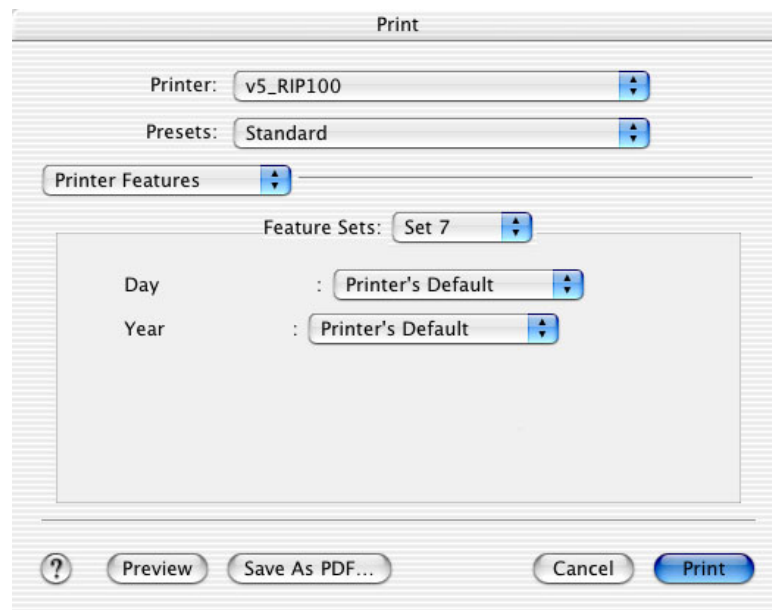
Cassette Selection: Printer's Default

CMYK labels for Quark 4+: Printer's Default

Final Due Date: Printer's Default

Month : Printer's Default

? Preview Save As PDF... Cancel Print

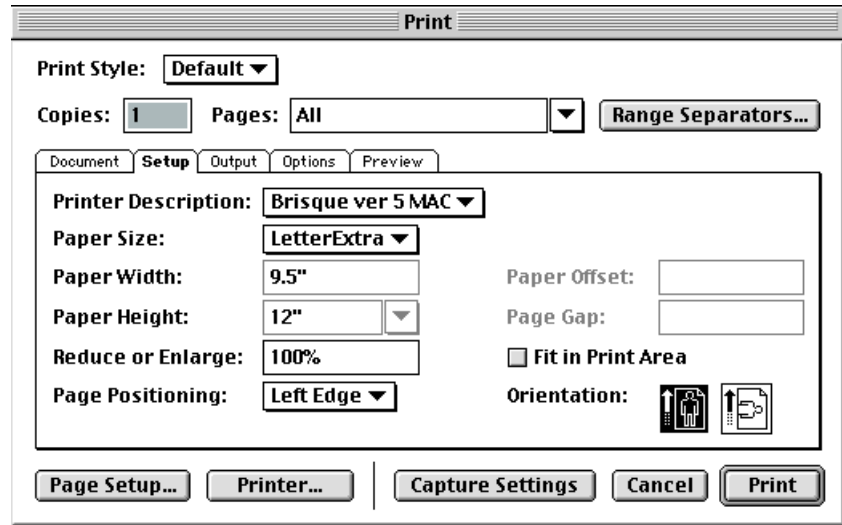


Important Notes for QX Users

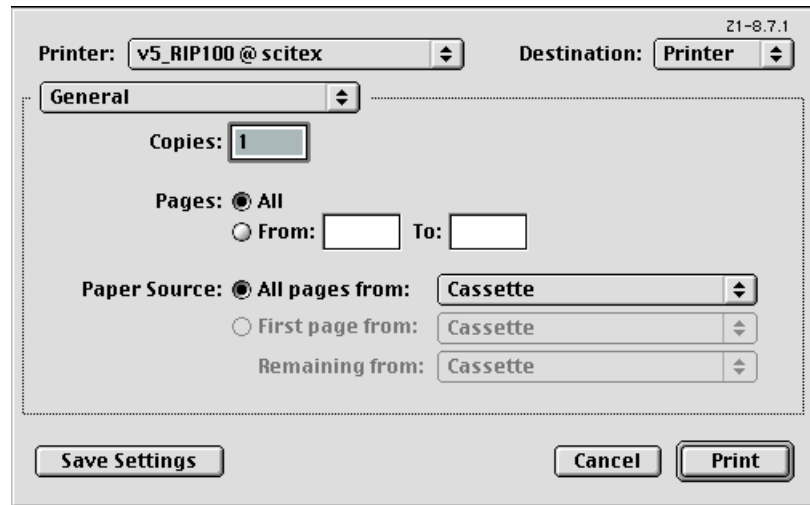
1) Using the CMYK option in QuarkPress 4.x Macintosh

To implement the CMYK option:

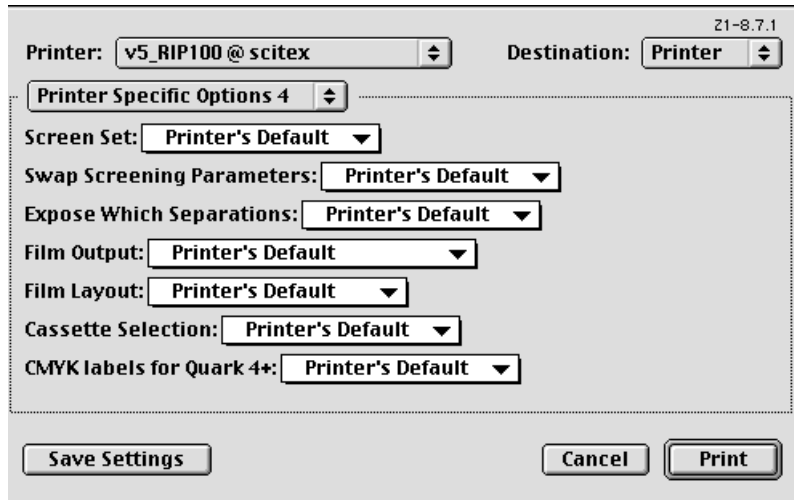
- a. Configure the Brisque Printer using a Brisque PPD.
- b. From the **File** menu, select **Print**; the **Setup** options in the **Print** dialog box appears.



- c. In the **Print** dialog box, click **Printer...** ; the **General** dialog box appears.



- d. In the **General** box select **Printer Specific Options**.



- e. In the **CMYK labels for Quark 4+** field, enter **Yes**.
- f. Click **Save Settings**.

2) Setting the QuarkXPress 4.x Print Dialog for Brisque Impose

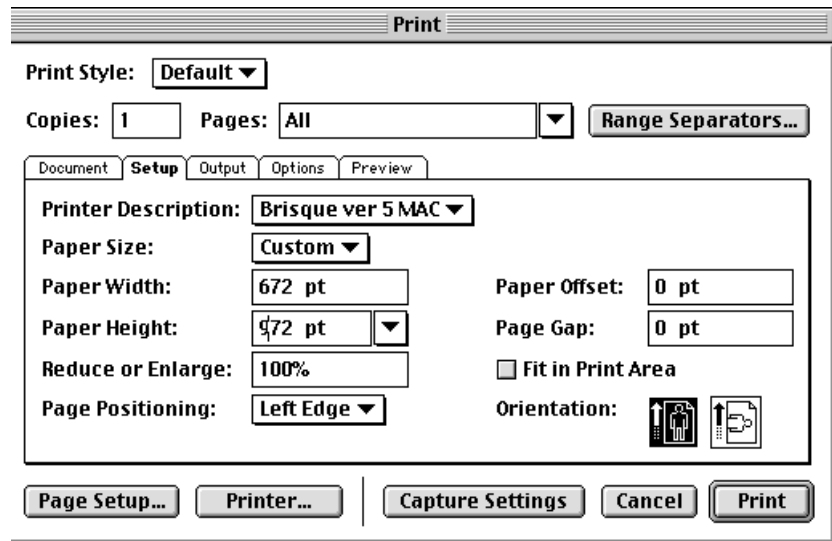
To center pages that contain bleeds, you must use the **Center** option. For the pages to be properly centered, the size of the page must incorporate the measure of bleed.

Defining the Page Size

The size of the page is defined as the original document size plus 36 additional points in each direction. Define the paper size for both standard and custom size papers.

To define the page size:

- a. From the **File** Menu, select **Print**; the **Setup** options in the **Print** dialog box appears.



- b. In the **Printer Description** box, select the **PPD** that fits your system configuration.
- c. In the **Paper Size** box, browse to find your paper size. If your paper size is not listed, select **Custom**. If your paper size is listed, select the page size and the suffix **Extra** and go straight to step 6.
- d. In the **Paper Width** box, enter the width of the document and add 72 additional points, with the suffix **pt**.
- e. In the **Paper Height** box, enter the height of the document and add 72 additional points with the suffix **pt**.



Note: You do not need to be working in points to add the size in points. To convert inches into points multiply the number of inches by 72. If you are using metric pages convert the width into inches ($\text{mm}/25.4 = \text{inches}$) and then the inches into points. Because the dialog box supports whole points only, round the result to the highest whole point.

- f. In the **Page Positioning** box, select **Center**.

3) Handling Bleed in QX

Bleed is the term used to describe items that are printed beyond the trim edge of a finished page.

To create a bleed item:

- a. Extend a bleed item from the print layout page onto the pasteboard.
- b. From the **File** menu, select **Print** to open the **Print** dialog box; then select the **Document** tab. In the **Bleed** box, enter the distance that you want to extend the bleed.
- c. Select the **Setup** tab and in the **Paper Size** box, select **Custom**.

- d. In the **Paper Width** and **Paper Height** boxes, enter the same bleed distance that you entered in the **Bleed** box on the **Document** tab.



Note: The **Page Positioning** box will automatically change to **Center**.

4) Centering Metric Pages

QuarkXPress 4.0 has a known limitation that causes metric pages (A3, A4, A5, etc) to center incorrectly within the crop marks. To center the page exactly within the crop marks, the metric pages need to be converted from millimeters to points. The following table shows the conversions for standard metric pages to points:

	Millimeter		Point	
Name	W	H	W	H
B1	707	1000	2004	2835
B2	500	707	1417	2004
B3	353	500	1001	1417
B4	250	353	709	1001
B5	176	250	499	709
A0	841	1189	2384	3370
A1	594	841	1684	2384
A2	420	594	1191	1684
A3	297	420	842	1191
A4	210	297	595	842
A5	148	210	420	595

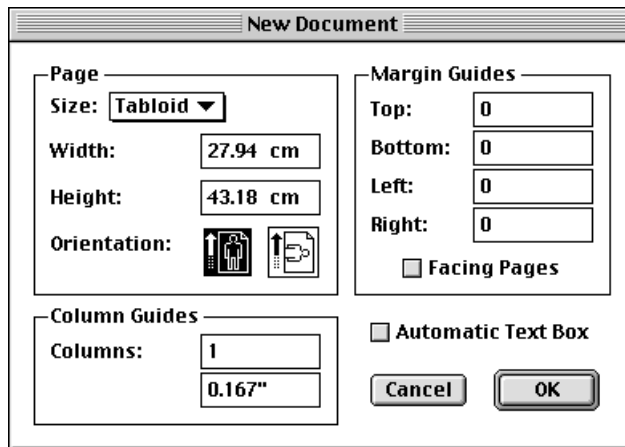


Note: Centering metric pages is no longer a limitation of QuarkXPress 6.0.

Converting a Metric Document to Points

To convert a metric document to points, follow the procedure below:

- a. From the file menu select **New**, the following dialog box appears:



- b. In the **Page Width** and **Page Height** boxes, enter the measurement in points followed by the suffix **pt**.
- c. Click **OK**.

